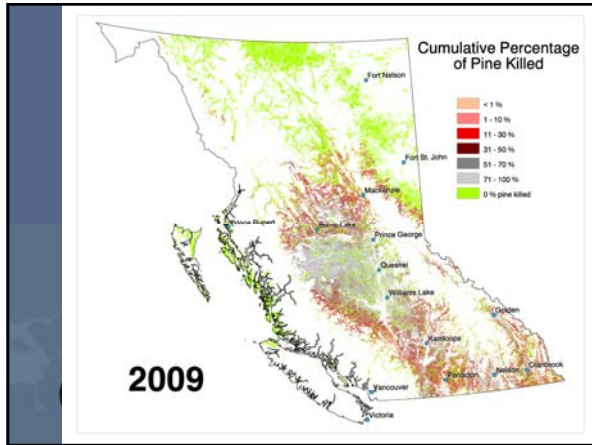
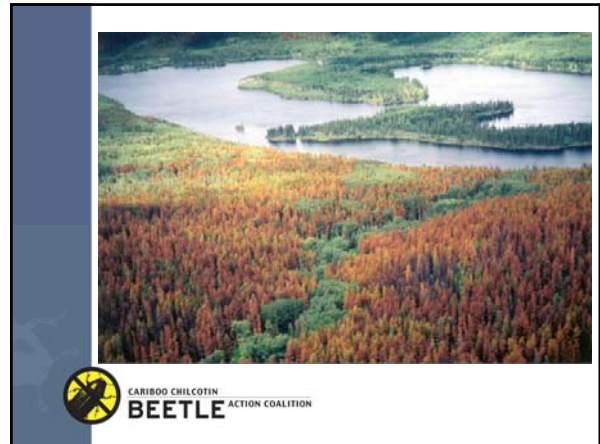


PROTECTING OUR FUTURE




CARIBOO CHILCOTIN
BEETLE ACTION COALITION


Aboriginal Business Service Network
2010 Strategic Conversations Conference
Aboriginal Economic Development Networking
November 30, 2010





Environmental Impacts


Water 


Wildlife 

Visuals 

Air and Soils 

Forage 

Traditional Use 

Business 

CARIBOO CHILCOTIN
BEETLE ACTION COALITION

Community Impacts
Industrial Tax Base, Core Infrastructure, Services



Culture  Economic Growth and Diversification 

Amenities

CARIBOO CHILCOTIN
BEETLE ACTION COALITION

Why form Beetle Action Coalitions?

- ✓ Building partnerships, knowledge, methods, approaches, strategies and a diversification plan/strategy
- ✓ Developing positions/advice & influence Governments and corporate policies & decisions to support sustainable development
- ✓ Enabling member communities to find, learn about, represent and act upon solutions that are community and regionally relevant
- ✓ CCBAC Formed in 2005

CARIBOO CHILCOTIN
BEETLE ACTION COALITION

CCBAC Board Membership

- Mayor of 100 Mile House
- Mayor of Quesnel
- Mayor of Williams Lake
- Cariboo Regional District Director
- Dakelh Language Group
- Northern Secwepemc Language Group
- Tsilhqot'in Language Group
- Conservation Sector
- Major Forest Licensees



Our Objectives

- To BE positive, constructive, entrepreneurial and innovative in dealing with the MPB problem.
- To AVOID contributing to the "sky-is-falling" syndrome.
- To LEAD on the issues and opportunities related to the MPB.



Our Critical Issues

- Community stability
- Leading and leadership
- Uncertainty, misinformation, fear
- Timber supply (over and under)
- Conservation
- Openness, communications, involvement
- Being proactive and decisive



The Strategy

- **Short-Term (Completed)**
 - Mountain Pine Beetle Mitigation Strategy (2008)
 - 'Road map' for the future
 - 1. THE ISSUE & EXPECTED IMPACTS
 - 2. REGIONAL STABILIZATION
 - 3. REGIONAL ECONOMIC DEVELOPMENT STRATEGY
 - 4. IMPLEMENTATION CAPACITY
 - Engaged Local Government, First Nations, Provincial and Federal Governments



Short-Term (Completed)

- Worked on creating mitigation strategies for various sectors of the region.
- Work was funded by the Coalition and by Government
- Economic Development Working Group
- Social Development Working Group
- Environmental Sustainability Strategies
- First Nations Strategies for each language group
- Forest Worker Transition Strategy
- Over \$1.6 Million utilized to produce strategies



Short-Term (Completed)

- **Completed Strategic Work**
 - Log Home Sector
 - Retention - Attraction Strategy
 - Agriculture Sector
 - Upper Shuswap, Tsilhqot'in, and Carrier Chilcotin Tribal Council Economic Development Strategies
 - Tourism Sector
 - Secondary Wood Manufacturing Sector
 - Technology Sector
 - Mining Sector
 - Conservation Sector
 - Arts, Culture and Heritage Sector
 - Forest Industry Sector
 - Forest Worker Sector
 - Social Development Sector



The Strategy (cont'd.)

- **Long-Term (2009-2025)**
 - Provide Leadership from a Regional Context
 - Support and lead economic, social, and environmental stabilization in the Cariboo-Chilcotin
 - Work with Provincial and Federal Governments to ensure appropriate delivery of funding and programs
 - CCBAC Approved Renewed Terms of Reference
 - Invest and Lead Projects that originate from Mitigation Strategies



Long-Term (2009-2025)

- Strength of Partnership Participation
 - regional partners and stakeholders involved
- Project Sustainability
 - full implementation plan
- Expert Involvement
 - steering committee to guide the project
- Reach of Project
 - create solutions that are regional in scope
- Timing of Project
 - self sustaining within 24 months of initiation



2009- 2010 Board Approved Projects

- Community Forest and Woodlot License "Bridges" Project – Optimizing Timber Values
- Log and Timber Frame Market Initiatives Project
- Green Energy in Rural Communities
- Cariboo Mountain Bike Tourism
- Cariboo-Chilcotin Agri-Web Extension Services
- Carbon Sequestration on Woodlot Licenses
- CCBAC Board investigating Rural BC Project
- CCBAC ha reviewed proposals for Agriculture in Schools Projects



Economic Development Opportunities

- Marketing Initiatives for Log and Timber Frame Builders
- Multi Coalition project
- Project will be a series of strategic actions to help identify new and expanding market opportunities for BC's Log Home and Timber Frame sector.
- Market expansion would help drive an expansion of the sector, resulting in more value-added employment in rural communities.



Economic Development Opportunities

- Value Optimization for Community Forest Tenures
- Multi Coalition project in conjunction with REDI
- Project seeks to develop more demand for Community Forest timber by communicating directly with value added businesses about long term supply
- The availability of those logs will create incentive to establish and operate value-added business in local communities.



Cariboo-Chilcotin Beetle Action Coalition

Now the MPB epidemic is over, we are still here, fighting to protect our lifestyles.

CCBAC is committed to working with Federal and Provincial Governments to realize regional economic, social and environmental stability.





PROTECTING OUR FUTURE



CARIBOO CHILCOTIN
BEETLE ACTION COALITION



Thank You
November 2010
Mr. Steve Mazur,
CCBAC Director
<http://c-cbac.com/index.php>